

Model	FA-590	FA-590A	FA-590S	FA-590SL
Counter screws	Yes			
Displaying number	Digital			
Counter settings	0-9999		Multi-mode	
Supported screw diameter (mm)	1.0-5.0mm (Can be adjusted)			
Support screw length	≤ 20mm			
Screw speed	2/s			
Screw Capacity	M1: 1500pcs M2: 1000pcs M3: 600pcs M4: 300pcs M5: 200pcs			M1: 3000pcs M2: 2000pcs M3: 1500pcs M4: 1000pcs M5: 600pcs
Input Voltage Adaptor	AC100-240V 50/60Hz			
Power	DC15V 2A		DC15V 4A	
Power Consumption	~ 30W		~ 60W	
Dimensions (Length x Width x Height)	210 x 127 x 150 mm		233 x 162 x 170 mm	
Gross Weight	~ 2.8 Kg	~ 2.8 Kg	~ 2.8 Kg	~ 5.0 Kg
Shell Material	Heat-resistant steel			

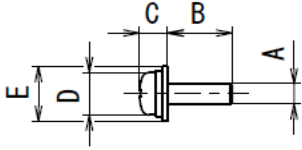

Distributor in Vietnam

Antek Vietnam Technology Co.,Ltd

 Website: www.antek.vn | Email: sales@antek.vn | Hotline: 0843 318 318

Reference table of the specified screws

* Within the range of the screw sizes and lengths below, there may be unique screw shapes or structures that may not be compatible with the feeder unit. If you use a tapping screw with a sharp point or a rough pitch, the wear may be severe. It is desirable that the B dimension is larger than the D and E dimensions.



Reference table of the specified screws							Shape of screw head						
Screw feeder series	Screw size	Screw shaft diameter A(φ)	Screw shaft length B(mm)	Screw head thickness C(mm)	Screw head diameter D(φ)	Washer diameter E(φ)	No. 0 pan head	Pan head	Pan head			bind	Counter sunk head
									Sems	Double sems	Washer head		
NSB NSR NSBI NSRI	φ1.0	0.9~0.95	1.6~10	0.35~1.0	1.8~4.5	-	○						
	φ1.2	1.1~1.15	1.9~10	0.35~1.0	1.8~4.5	-	○						
	φ1.4	1.3~1.4	2.2~10	0.35~1.0	2.0~4.5	-	○						
	φ1.7	1.6~1.7	2.7~10	0.35~1.0	2.5~4.5	-	○						
	φ2.0	1.9~2.1	3.2~20	0.35~4.5	3.0~6.0	3.0~9		○	○	○	○	○	○
	φ2.3	2.2~2.4	3.7~20	0.35~4.5	3.3~6.0	3.3~9		○	○	○	○	○	○
	φ2.6	2.5~2.7	4.2~20	0.35~4.5	3.6~6.0	3.6~9		○	○	○	○	○	○
φ3.0	2.9~3.1	4.8~20	0.35~4.5	4.0~6.0	4.0~9		○	○	○	○	○	○	

* Compatible with washer thickness 0.35 to 1.0mm.

Reference table of the specified screws							Shape of screw head				
Screw feeder series	Screw size	Screw shaft diameter A(φ)	Screw shaft length B(mm)	Screw head thickness C(mm)	Screw head diameter D(φ)	Washer diameter E(φ)	Pan head	Pan head			bind
								Sems	Double sems	Washer head	
OM-26M OM-26R	φ2.0	1.9~2.1	3.2~25	0.35~6	3.0~6.0	3.0~10	○	○	○	○	○
	φ2.3	2.2~2.4	3.7~25	0.35~6	3.3~6.0	3.3~10	○	○	○	○	○
	φ2.6	2.5~2.7	4.2~25	0.35~6	3.6~6.0	3.6~10	○	○	○	○	○
	φ3.0	2.9~3.2	4.8~25	0.35~6	4.0~6.0	4.0~11	○	○	○	○	○
	φ3.5	3.4~3.7	5.6~25	0.35~6.5	4.8~8.0	4.8~11	○	○	○	○	○
	φ4.0	3.8~4.2	6.4~25	0.35~6.5	5.4~8.0	5.4~12	○	○	○	○	○
	φ5.0	4.8~5.2	8.0~25	0.35~7	6.2~10	6.2~12	○	○	○	○	○
φ6.0	5.8~6.2	9.6~25	0.35~7.5	7.2~11	7.2~12	○	○	○	○	○	

* Compatible with washer thickness 0.35 to 1.6 mm.

* Dedicated for magnetized screws. Countersunk screws are not allowed.

Reference table of the specified screws							Screw head shape	
Screw feeder series	Screw size	Screw shaft diameter A(φ)	Screw shaft length B(mm)	Screw head thickness C(mm)	Screw head diameter D(φ)	Washer diameter E(φ)	No. 0 pan head	Pan head
SS-12 SSI-12M SSI-12R	φ1.0	0.9~0.95	1.6~10	0.35~1.0	1.8~2.0	-	○	
	φ1.2	1.1~1.15	1.9~10	0.35~1.0	1.8~2.3	-	○	
	φ1.4	1.3~1.4	2.2~10	0.35~1.0	2.0~2.5	-	○	
	φ1.7	1.6~1.7	2.7~10	0.35~1.0	2.5~3.0	-	○	
SS-23 SSI-23M SSI-23R	φ2.0	1.9~2.1	3.2~16	0.35~1.3	3.0~3.5	-		○
	φ2.3	2.2~2.4	3.7~16	0.35~1.5	3.5~4.0	-		○
	φ2.6	2.5~2.7	4.2~16	0.35~1.7	4.0~4.5	-		○
	φ3.0	2.9~3.1	4.8~16	0.35~2.0	5.0~5.5	-		○

* Countersunk screws are not allowed.

Applicable Screw Reference Table							Screw head shape					
Screw feeder series	Screw nominal diameter	Screw shaft diameter A(φ)	Screw shaft length B(mm)	Screw head thickness C(mm)	Screw head diameter D(φ)	Washer diameter E(φ)	Pan head	Pan head			Bind	Counter -sunk
								Sems	Double sems	Washer head		
NJ NJR	φ2.0	1.8~2.1	3.2~18	0.5~5.5	3.0~3.5	3.0~8.0	○	○	○	○	○	○*1
	φ2.3	2.1~2.4	3.7~18	0.5~5.5	3.0~4.0	3.0~8.0	○	○	○	○	○	○*1
	φ2.6	2.4~2.7	4.2~18	0.5~5.5	3.6~4.5	3.6~8.0	○	○	○	○	○	○*1
	φ3.0	2.8~3.2	4.8~18	0.5~5.5	4.0~5.5	4.0~8.0	○	○	○	○	○	○*1
	φ3.5	3.3~3.8	5.6~18	0.5~8.0	4.8~8.0	4.8~12	○	○	○	○	○	○*1
	φ4.0	3.8~4.3	6.4~18	0.5~8.0	5.4~8.0	5.4~12	○	○	○	○	○	○*1
	φ5.0	4.8~5.2	8.0~18	0.5~8.0	6.2~10.0	6.2~12	○	○	○	○	○	○*1

* Compatible with washer thicknesses from 0.4 to 1.0 mm.

* 1 Special specification T046 recommended for NJ. (With screw guide for countersunk screws)

Screw feeder series	Applicable Screw Reference Table						Screw head shape					
	Screw nominal diameter	Screw shaft diameter A(φ)	Screw shaft length B (mm)	Screw head thickness C (mm)	Screw head diameter D (φ)	Washer diameter E (φ)	Pan head	Pan head			Bind	Counter-sunk
								Sems	Double sems	Washer head		
NJL NJRL	φ2.0	1.8~2.1	3.2~25	0.5~5.5	3.0~3.5	3.0~8.0	○	○	○	○	○	○*1
	φ2.3	2.1~2.4	3.7~25	0.5~5.5	3.0~4.0	3.0~8.0	○	○	○	○	○	○*1
	φ2.6	2.4~2.7	4.2~25	0.5~5.5	3.6~4.5	3.6~8.0	○	○	○	○	○	○*1
	φ3.0	2.8~3.1	4.8~25	0.5~5.5	4.0~5.5	4.0~8.0	○	○	○	○	○	○*1
	φ3.5	3.3~3.7	5.6~25	0.5~8.0	4.8~8.0	4.8~12	○	○	○	○	○	○*1
	φ4.0	3.8~4.1	6.4~25	0.5~8.0	5.4~8.0	5.4~12	○	○	○	○	○	○*1
φ5.0	4.8~5.1	8.0~25	0.5~8.0	6.2~10.0	6.2~12	○	○	○	○	○	○*1	

* Compatible with washer thicknesses from 0.4 to 1.0 mm.

* 1 Special specification T046 recommended for NJL. (With screw guide for countersunk screws)

Screw feeder series	Applicable Screw Reference Table						Screw head shape					
	Screw nominal diameter	Screw shaft diameter A(φ)	Screw shaft length B (mm)	Screw head thickness C (mm)	Screw head diameter D (φ)	Washer diameter E (φ)	Pan head	Pan head			Bind	Counter-sunk
								Sems	Double sems	Washer head		
FM-36 FME-36	φ3.0	2.8~3.2	4.8~25	1.0~5.5	4.0~5.5	4.0~8.0	○	○	○	○	○	○
	φ3.5	3.3~3.8	5.6~25	1.0~8.0	4.8~8.0	4.8~12.0	○	○	○	○	○	○
	φ4.0	3.8~4.3	6.4~25	1.0~8.0	5.4~8.0	5.4~12.0	○	○	○	○	○	○
	φ5.0	4.8~5.2	8.0~25	1.0~8.0	6.2~10.0	6.2~12.0	○	○	○	○	○	○
	φ6.0	5.8~6.3	9.6~25	1.0~8.0	7.2~12.0	7.2~12.0	○	○	○	○	○	○

* Compatible with washer thicknesses from 0.5 to 1.6 mm.

Reference table of the specified screws (Special specification)

* Within the range of the screw sizes and lengths below, there may be unique screw shapes or structures that may not be compatible with the feeder unit.

If you use a tapping screw with a sharp point or a rough pitch, the wear may be severe.

It is desirable that the B dimension is larger than the D and E dimensions.

Screw size	Screw feeder model	Reference table of the specified screws							Screw head shape					
		Screw size	Screw shaft diameter A(φ)	Screw shaft length B (mm)	Screw head thickness C (mm)	Screw head diameter D (φ)	Washer diameter E (φ)	Washer thickness (mm)	Pan head	Pan head			Bind	Counter-sunk
										Sems	Double sems	Washer head		
NJ	NJ-4560(T003)	φ6.0	5.8~6.3	9.6~18	0.5~8.0	7.2~13	7.2~13	0.5~1.6	○	○	○	○	○	○
NJR	NJR-4560(T002)	φ6.0	5.8~6.3	9.6~18	0.5~8.0	7.2~13	7.2~13	0.5~1.6	○	○	○	○	○	○
NJRL	NJRL-4560(T090)	φ6.0	5.8~6.2	9.6~25	0.5~8.0	7.2~13	7.2~13	0.5~1.6	○	○	○	○	○	○
NSB	NSB-35(T048)	φ3.5	3.3~3.5	5.6~20	0.35~5.0	4.8~8.0	4.8~9.0	0.35~1.0	○	○	○	○	○	○
	NSB-40(T049)	φ4.0	3.8~4.0	6.4~20	0.35~5.0	5.4~8.0	5.4~9.0	0.35~1.0	○	○	○	○	○	○
NSR	NSR-35(T035)	φ3.5	3.3~3.5	5.6~20	0.35~5.0	4.8~8.0	4.8~9.0	0.35~1.0	○	○	○	○	○	○
	NSR-40(T036)	φ4.0	3.8~4.0	6.4~20	0.35~5.0	5.4~8.0	5.4~9.0	0.35~1.0	○	○	○	○	○	○
NSBI	NSBI-35(T177)	φ3.5	3.3~3.5	5.6~20	0.35~5.0	4.8~8.0	4.8~9.0	0.35~1.0	○	○	○	○	○	○
	NSBI-40(T178)	φ4.0	3.8~4.0	6.4~20	0.35~5.0	5.4~8.0	5.4~9.0	0.35~1.0	○	○	○	○	○	○
NSRI	NSRI-35(T132)	φ3.5	3.3~3.5	5.6~20	0.35~5.0	4.8~8.0	4.8~9.0	0.35~1.0	○	○	○	○	○	○
	NSRI-40(T133)	φ4.0	3.8~4.0	6.4~20	0.35~5.0	5.4~8.0	5.4~9.0	0.35~1.0	○	○	○	○	○	○
FM-36	FM-3626(T017)	φ2.6	2.4~2.7	4.8~25	1.0~5.5	3.6~4.5	3.6~8.0	0.5~1.6	○	○	○	○	○	○

Notes:

•For screws that deviate from the guideline, please contact us with the screw drawings.

•Pointed tapping screws cannot be used for NJ, NJR, and FM series.

The NSB, NSR, NSBI, and NSRI series may be compatible with tapping screws as special specifications.

Please contact us using the model selection hearing form.

•For screws with the same screw shaft diameter and screw head thickness,

such as CAP bolts, it may be difficult to flow with standard products, so please contact us using the model selection hearing form.